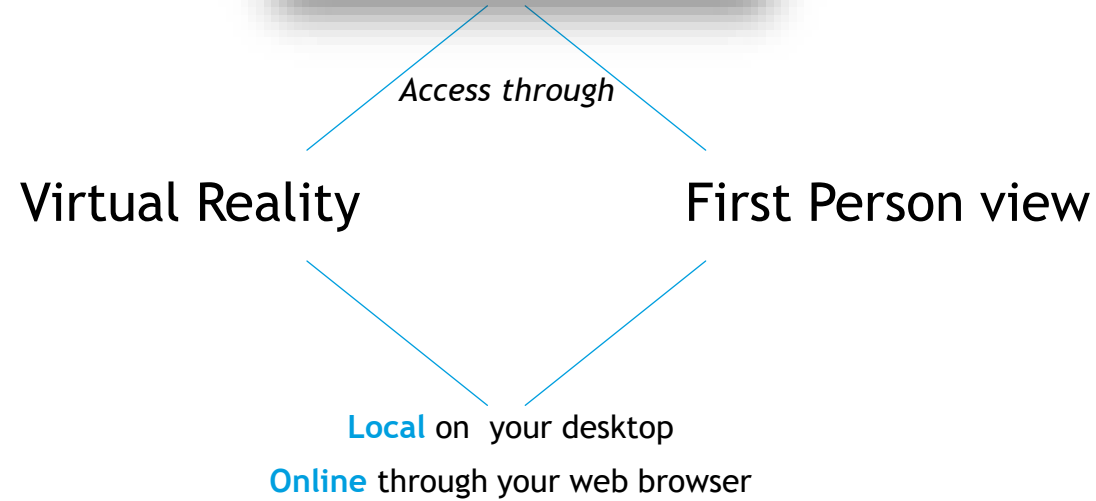
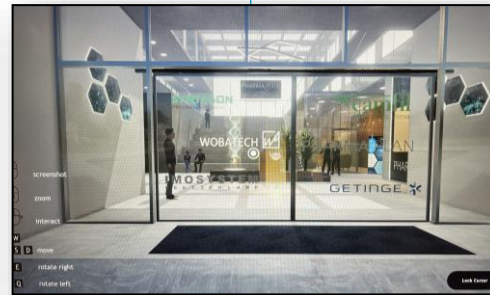
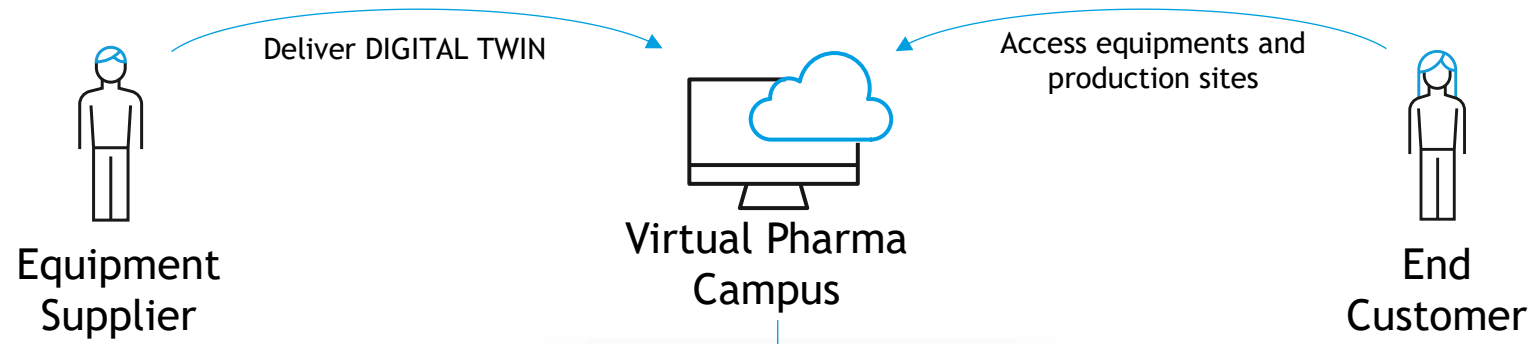


Virtual Campus

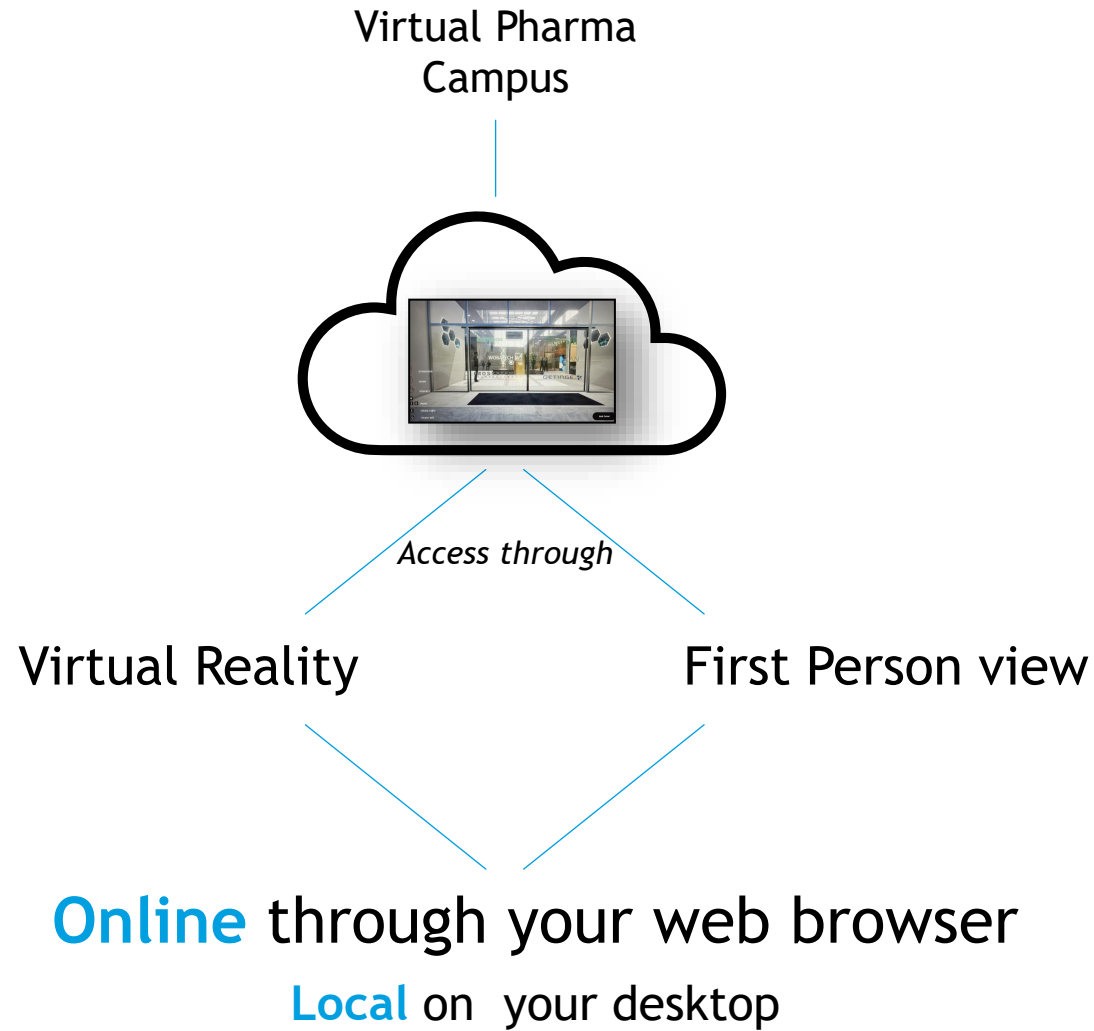
Christian Miguel-Langstrof

PHARMA|PLAN

Virtual Pharma Campus



Virtual Pharma Campus



Virtual Pharma Campus

Virtual Pharma
Campus

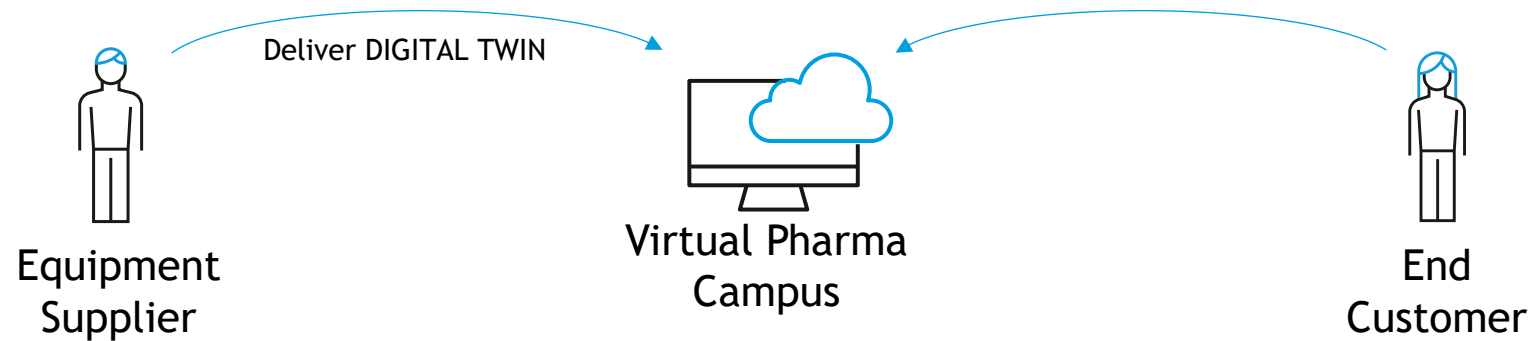


- > Server in Europe
- > Full User Management
- > DSGVO conform

Access various
showrooms and trainings



Virtual Pharma Campus - Equipment Suppliers and End Customer



BENEFITS

- > Present your assets (equipments)
- > Deliver Digital Twin month's before delivering your physical asset
- > Visual alignment during project execution
- > Train your customers

BENEFITS

- > Get to know your future assets (equipment) before project
- > Receive your DIGITAL ASSET months before your PHYSICAL EQUIPMENT
- > Utilize your DIGITAL FACILITY months before your PHYSICAL FACILITY is realized

Virtual Pharma Campus - End Customer benefits examples



The SOL1 virtual tour was created in collaboration with Bayer to introduce all future employees to their new working environment. It guides new employees virtually (or First Person View) through the new state-of-the-art Tabletfactory with 4 modules connected by a supply module (spine) based on the personnel and material flow. This made it possible to train production and support processes months before completion of the physical factory without hindering the construction process, commissioning or qualification measures. Through 75 information points, information about the new workplace is provided within the guided tour to ensure an efficient transfer of knowledge from engineering to operations.



Virtual Pharma Campus - End Customer benefits examples



For the Simtra (previously Baxter) application we focused on reproducing a visually attractive 3D representation of the production area. Visitors can move freely in the production area and inspect the animated syringe- and vial line to help them understand the relevant steps in the pharmaceutical fill & finish process. The customer (CDMO) is using this application to show and explain their future production capacity's to future customers month before real equipment is commissioned.



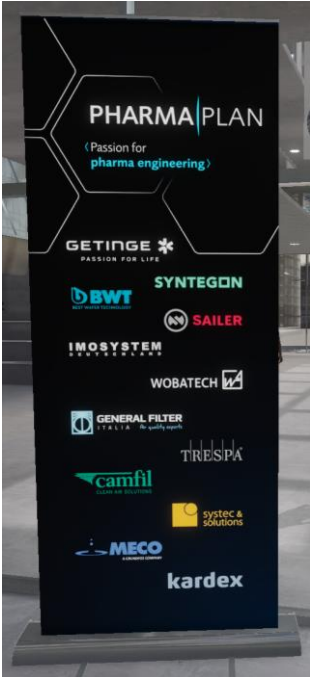
Virtual Pharma Campus - Live Demo

LIVE DEMO

Pharmaplan Virtual CAMPUS

Lieferanten die schon auf der Plattform sind:

Lieferanten die aktuell integriert werden oder ein Interesse zeigen auf die Plattform zu kommen:



Kunden auf der Plattform

Kunden die aktuell integriert werden oder ein Interesse zeigen auf die Plattform zu kommen:



Virtual Pharma Campus - End Customer benefits examples



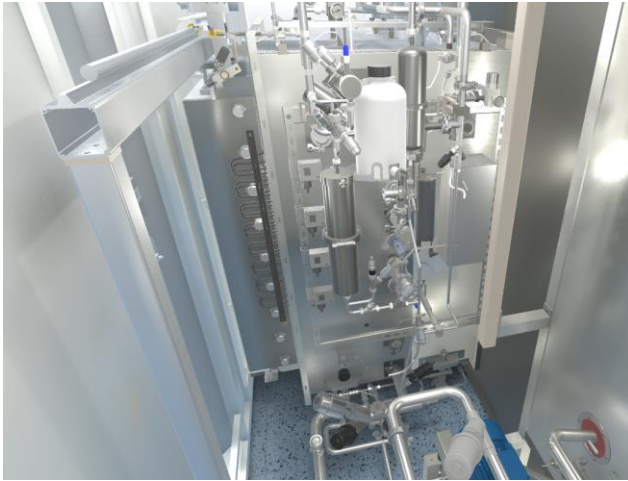
Once the virtual environment is created, customers take the opportunity to develop VIDEOS to explain or showcase content to their employees or clients. These are screenshots of a video which runs through a Filling Line with “the view of a vial”.



Virtual Pharma Campus - Equipment supplier showrooms



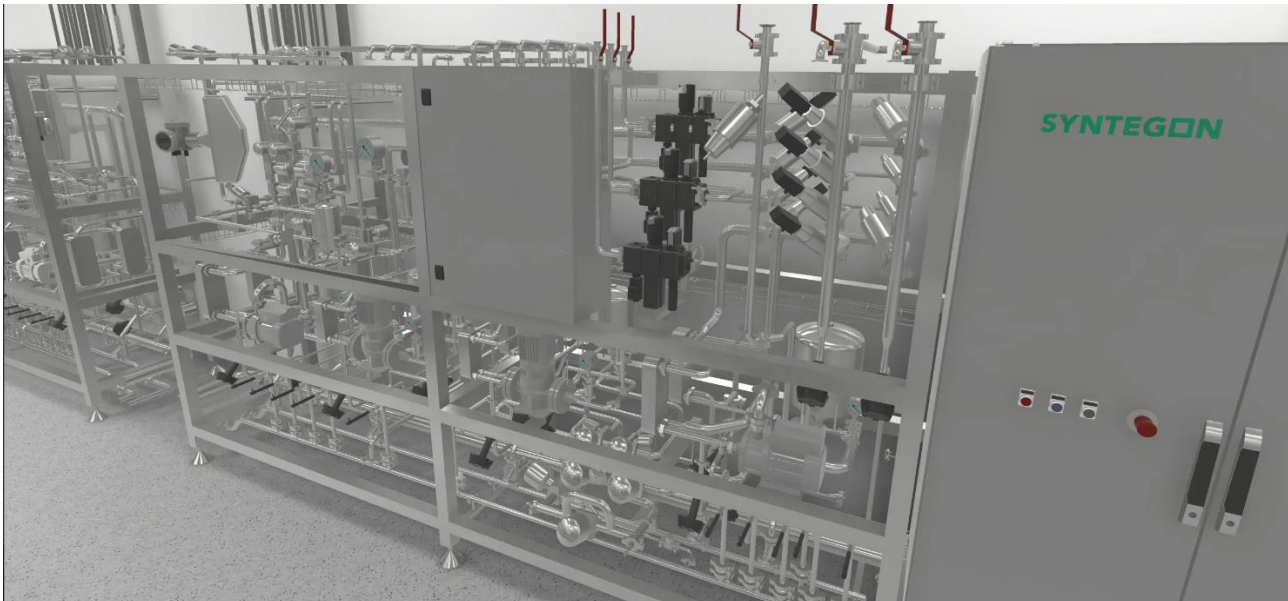
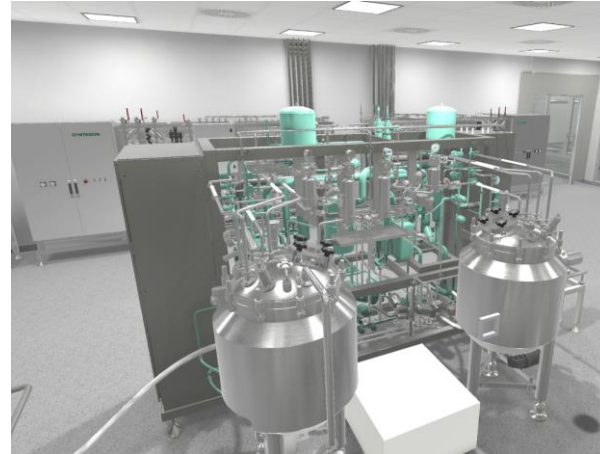
Getinge



Virtual Pharma Campus - Equipment supplier showrooms



Syntegon



Virtual Pharma Campus - Equipment supplier showrooms



SAILER



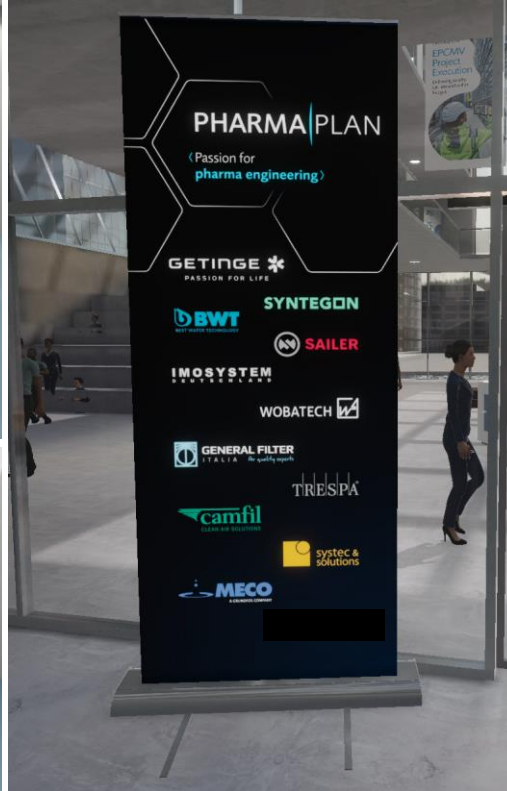
Virtual Pharma Campus - Equipment supplier showrooms

Systemec & Solutions



Virtual Pharma Campus - Equipment supplier showrooms

Kardex



Pricing

VR Project Scale

> Most typical for Equipment suppliers



VR-Prototype

- Simple interactions
- small scale facility section
- equipment showroom

Place assets in a showroom

> Most typical for mid size pharmaceutical end-customers



Medium Scale VR

- Interactive trainings
- small facilities or selected areas
- (limited) integration of original supplier equipment models
- extended showrooms

- 10.000-100.000€
- 1-6 months

> Most typical for large size pharmaceutical end-customers



Large scale VR

- Full facilities
- integration of original supplier equipment models
- extensive interactions

- > 100.000€
- > 6 months

- Free of charge
- <10.000€
- < 1 month



Technical

Technical

Most popular supported formats: glTF, obj, IFC, IGES, STEP or FBX.

Link to an extended list of supported formats: [>>LINK<<](#)

No need to download extra software to your Laptop/PC. You will either receive an executable (.exe) you can start local on your Laptop/PC or you get access to our WebStreaming Platform*

*Additional costs 2.500€ for 100 hours of WebStreaming

TECHNICAL DETAILS AND REQUIREMENTS

Headsets: VR headsets are required to immerse the user in a virtual environment. These headsets come with motion sensors, high-resolution displays, and built-in audio systems.

~700€

High-end PC with a good Graphic Card, Ram and CPU is required:

Example specifications:

- Processor: Intel Core i5-10600K or AMD Ryzen 5 5600X
- Graphics Card: NVIDIA GeForce RTX 3070 or AMD Radeon RX 6800
- RAM: 16GB DDR4
- Storage: 1TB NVMe SSD
- Operating System: Windows 10

~3.500€



TECHNICAL DETAILS AND REQUIREMENTS

VR-Headsets we are supporting:

OVR/Oculus/Meta:

- Oculus Rift/Rift-S
- Oculus Quest
- Meta Quest 2

Pico XR

- Pico Neo 3

SteamVR

- Oculus Rift/Rift-S/Quest
- Meta Quest 2
- HTC Vive/Vive Pro
- HTC Vive Cosmos
- Valve Index

WaveXR

- HTC Vive Focus 3

Windows Mixed Reality

- Standard WMR headsets
- Samsung Reverb G2



The image features a dark blue background with a pattern of small, glowing white and light blue circles and dots, resembling a starfield or a data visualization. A large, solid blue shape, resembling a stylized arrow or a corner of a page, points towards the right. Inside this blue shape, the word "Upcoming" is written in a clean, white, sans-serif font.

Upcoming

What's next

Short-Term:

- > Provide personalized (Corporate Identity) Arcade Player to increase availability to all clients and employees

Mid-Term:

- > Configurable Training scenarios
 - > Training platform connected to internal IT-Systems through Active Directory

Long-Term:

- > Meet with customers or colleagues within our Virtual Campus



Contact

Contact information

You want to join the Pharmaplan Campus

For more information get in contact with
Christian Miguel-Langstrof



Scan contact
card

PHARMA|PLAN